

Hi!

This portfolio includes some
samples of my work at the
University of Lapland.

Thanks for your
interest!



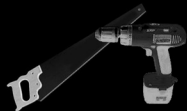


Sketching Skills

I use mainly pencils and markers for sketching.
I'm also using wacom graphire & photoshop for
quick computer-aided sketching.



A drawing for a course of hand rendering. Made with markers and pastels.

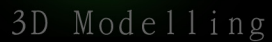


Model building




A model of a MP3 player. Made of cibatooll using handtools only.

A quick scale model of a children' s furniture.
Made of foam and craft felt.



grap hic design

I have been taking courses of
using Adobe Illustrator and
Photoshop and a course of
graphic design basics.




THE GAMBLER

THE GAMBLER isn't just a watch.
It is the watch for a man who
wants to stay in the center of
game and keep the reins on his
own hands.

This quality watch by Nixon has
been made using the best materi-
als available. Fine leather and
durable steel guarantees that
your watch is longlasting and
comfort to wear. Nixon watches
are simple to use and keep their
time accurately.

Gamble - Your watch doesn't.







The White Buffalo, Country artist

www.nixonnow.com

Practice to design a prospect for a brand.



Poster for a fictional espresso label.



Photographing

Some photos taken while practicing product photography. Photos taken using Canon EOS 300D.

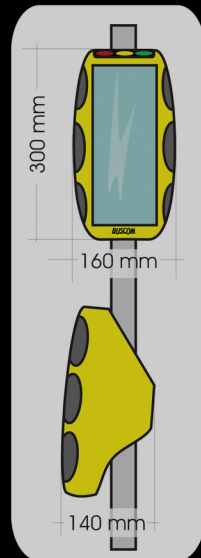


BUSCOM CLD

1st year design project:
The brief was to re-design
Buscom's ticket reader for
means of public transport.

I thought ticket reader should
be colorful so it would be
easier to notice. It should
endure evildoing (material
feature and installation method).
It should be easy to use (with only
one hand) and guide the user.

...and that's my insight about it:



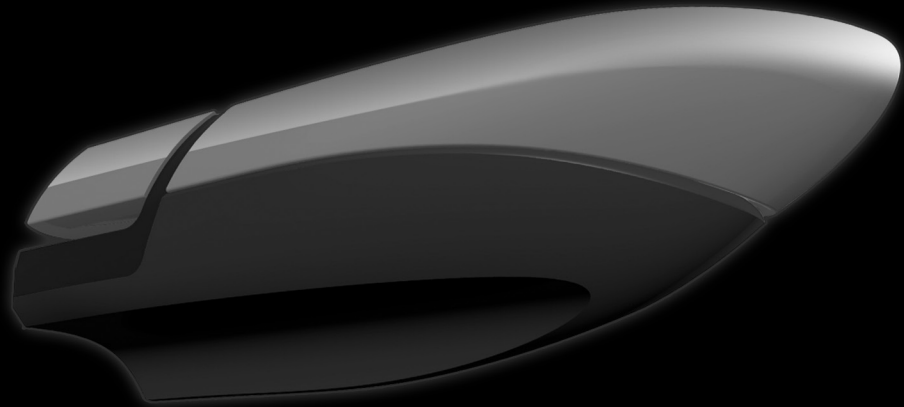
2WX by TORPEDO BOYS

2WX is a group work made as our 2nd year design project. I was making it with my class mates Heikki Tuisku, Riku Tuusa, Jani Huhtala and Elle Valkeapää.

We had a brief to design a new kind of boat for 4-6 person. Considering the boat more as a place to hang out than a mean of transport we was approaching the assignment by figuring out different activities to do on board.

The boat has a lot of transparent surfaces to get the inside lighter. Navigation is mainly automatic and all the manual navigation equipment are located on the bow. 2WX has beds for 4 people situated in those two tubes on the rear of the boat. On an one day cruising it has nicely room for 6-8 person.





The boat has a shark-a-like form to emphasize sportiness and masculinity.

49' (15 m)



18' (5.5 m)

